

A large, colorful molecular model composed of various spheres (blue, green, red, orange, yellow, pink, white) connected by thin white rods. The model is positioned on the left side of the image, with a faint, light blue silhouette of a human head in profile behind it. The background is a light blue gradient.

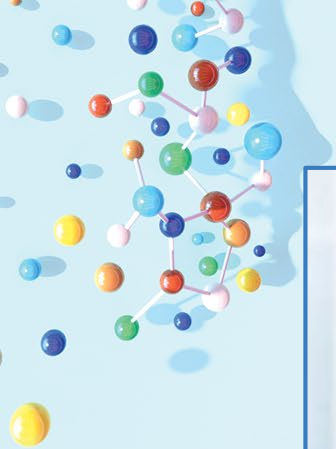
FROM  
MOLECULE TO  
PATIENT

ASCPT 2019  
ANNUAL MEETING



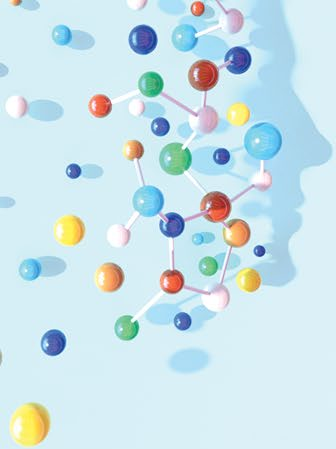
# Leon I. Goldberg Award

Sara Van Driest, MD, PhD

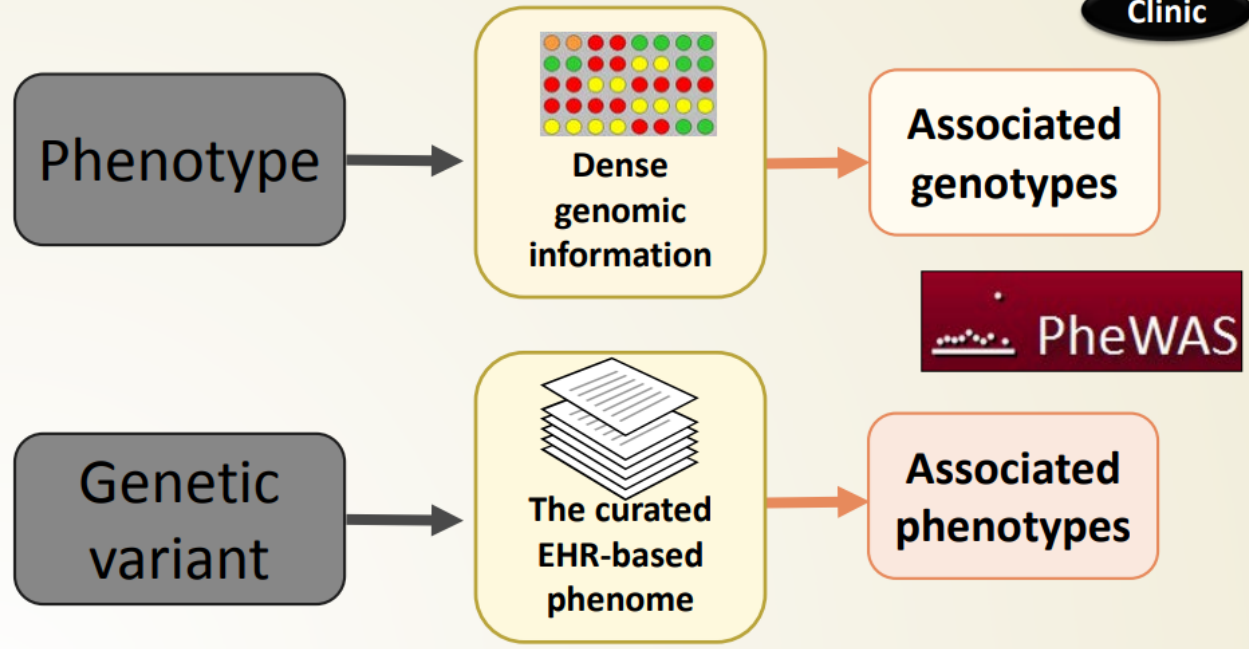


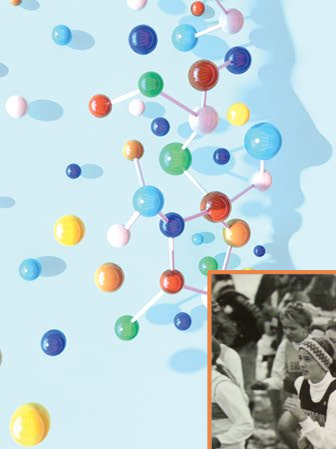
FROM  
MOLECULE TO  
PATIENT





# The Clinic in Precision Medicine: New Techniques





FROM  
MOLECULE TO  
PATIENT

